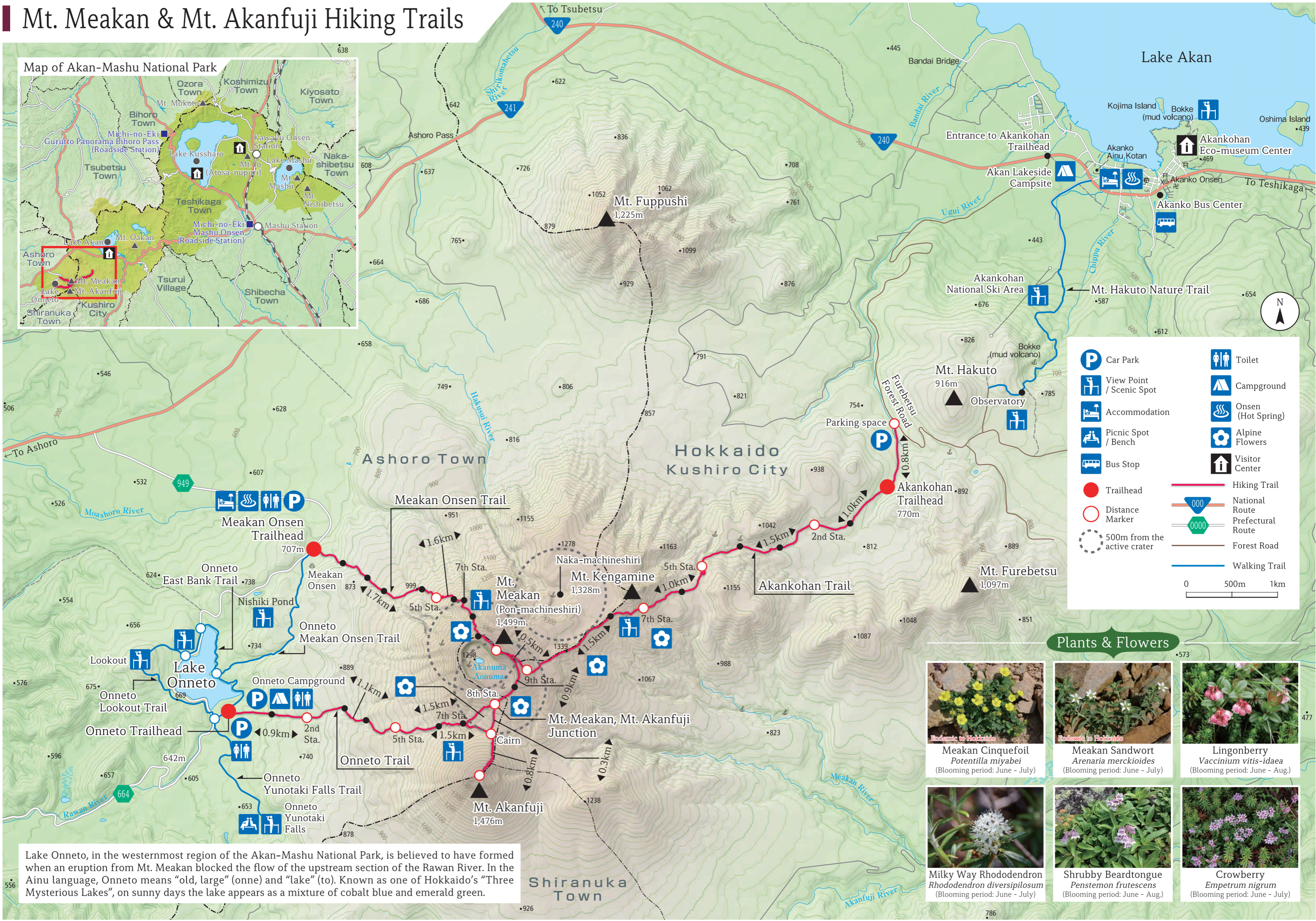
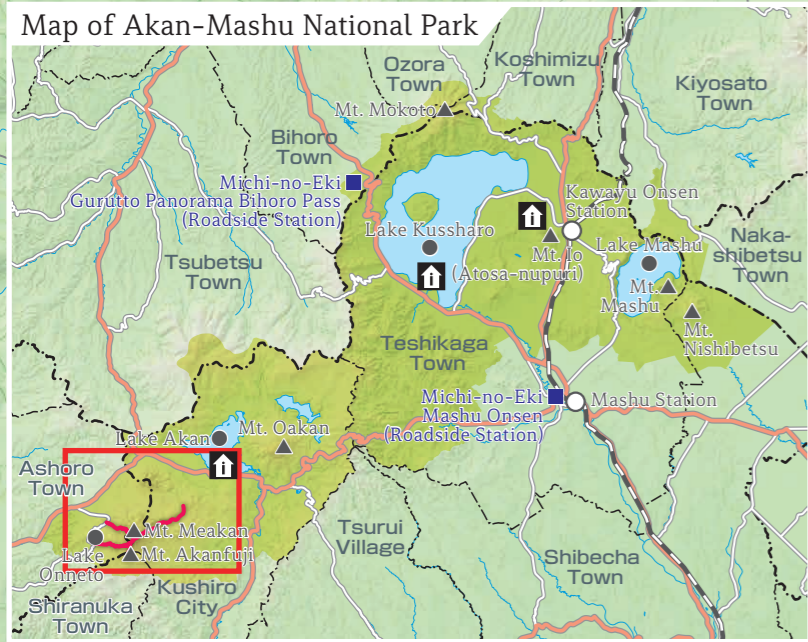


Mt. Meakan & Mt. Akanfuji Hiking Trails

Map of Akan-Mashu National Park



	Car Park		Toilet
	View Point / Scenic Spot		Campground
	Accommodation		Onsen (Hot Spring)
	Picnic Spot / Bench		Alpine Flowers
	Bus Stop		Visitor Center
	Trailhead		Hiking Trail
	Distance Marker		National Route
	500m from the active crater		Prefectural Route
			Forest Road
			Walking Trail

0 500m 1km

Plants & Flowers



Meakan Cinquefoil
Potentilla miyabei
(Blooming period: June - July)



Meakan Sandwort
Arenaria merckiioides
(Blooming period: June - July)



Lingonberry
Vaccinium vitis-idaea
(Blooming period: June - Aug.)



Milky Way Rhododendron
Rhododendron diversipilosum
(Blooming period: June - July)



Shrubby Beardtongue
Penstemon frutescens
(Blooming period: June - Aug.)



Crowberry
Empetrum nigrum
(Blooming period: June - July)

Lake Onneto, in the westernmost region of the Akan-Mashu National Park, is believed to have formed when an eruption from Mt. Meakan blocked the flow of the upstream section of the Rawan River. In the Ainu language, Onneto means "old, large" (onne) and "lake" (to). Known as one of Hokkaido's "Three Mysterious Lakes", on sunny days the lake appears as a mixture of cobalt blue and emerald green.